



CONSULTANT SPECIALIST TEAM CARE

The Consultant Specialist Team Care program is focused on supporting specialists to develop, implement, and sustain a team care model within their community office to improve the patient and provider experience.

WHAT'S IN IT FOR ME?

Mentorship to support you on your team care journey

Funding for specialists licensed in B.C to implement a team care model

Engaging virtual and in-person workshops led by a panel of clinical and content experts

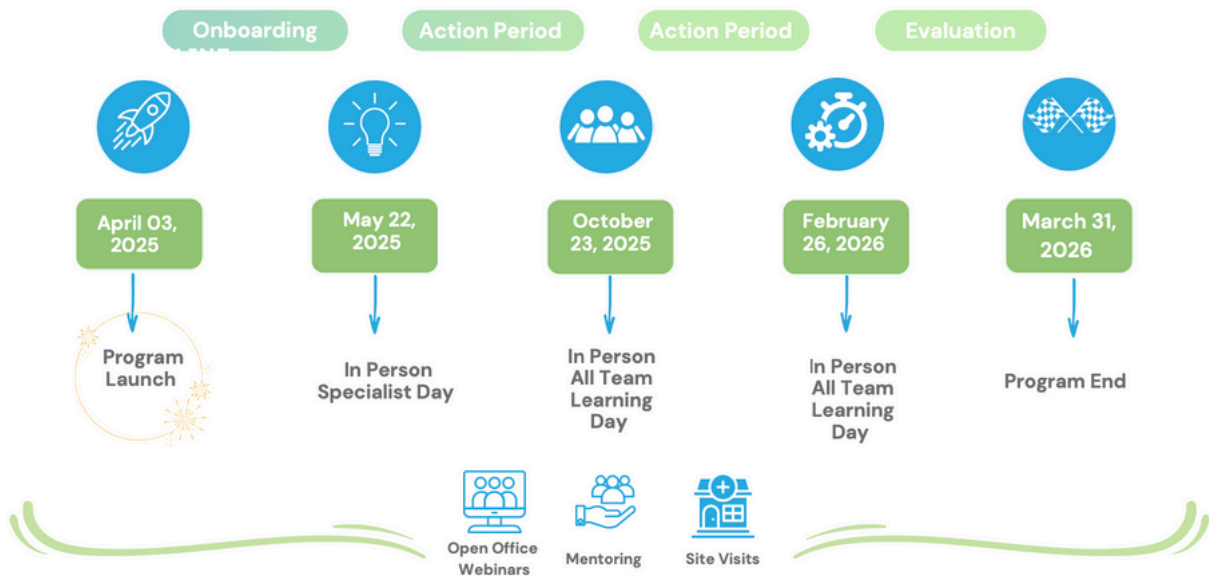
Collaboration and networking opportunities with specialists to share and learn.

Ability to select an allied health professional or nurse to support and sustain your team care model

Who Can Apply?

All specialists in the province of BC who maintain a community-based practice and accept new patient referrals.

Program Timeline



Scan here to learn more or apply for an upcoming cohort

